



QUAD PULSE PACKAGE

Features:

- Pressure shock-resistant housing
- Tested with highly reactive aluminum dust
- ATEX type certified in the highest safety category
- Advanced online-cleaning function
- Various dust discharge options
- Compact design, small footprint
- Indoor installation close to the process
- Available with 1 or 2 filter cartridges

Today's industries - from metalworking to battery cell manufacturing - face serious safety challenges due to reactive materials like aluminum and explosive gases. The QPP DX is specifically designed and full-scale tested for safe operation in these high-risk environments. Its pressure shock-resistant housing allows for close-to-process installation without the need for additional safety systems, simplifying layouts and future upgrades. With a highly efficient, easy-to-service filtration system, the QPP DX delivers reliable performance with tailored options to match varying dust volumes.

Applications

Suitable for metalworking applications such as: Blasting, grinding and polishing of light metal. Furthermore, the unit has proven on various battery cell manufacturing processes.

Explosion protection

The QPP DX is designed with pressure shock-resistant housing which maintains its integrity with no damage during an explosion event. No need for additional expensive explosion protection devices, the unit is ATEX certified for ST1 metal and ST2 organic dusts. The Absolute H14 HEPA filter acts as a validated flame barrier.

Cleaning system

Quad Pulse Package dust collectors provide a cleanable filter system that allows continuous manufacturing processes and prevents from regular, expensive filter replacements. The filter cartridges are divided into four segments and are continuously cleaned, one at a time, by the unique Quad Pulse system, ensuring constant air flows during operation.

Installation

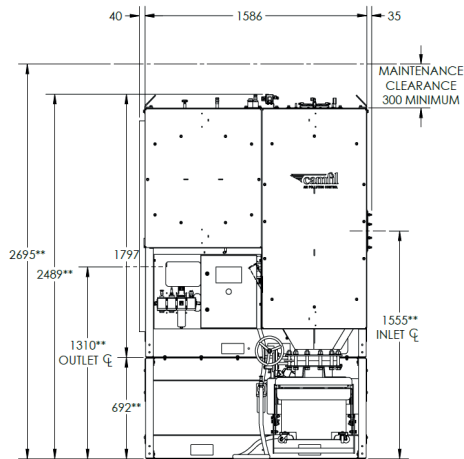
The compact design and small footprint allows installation close to the process what in turn reduces the amount of ductwork and mitigates exposure risks for operators. Various inlet and outlet options are available.

Air volume

The QPP DX is available with 1 or 2 filter cartridges and handles air volumes up to 1,500 / 3,000 m³/h.

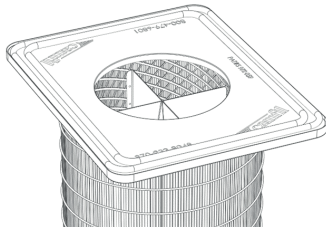
Technical data

Front view

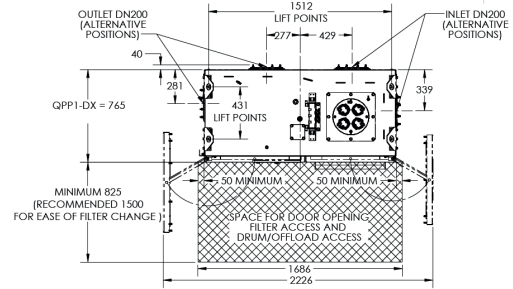


** DIMENSIONS AS MARKED ARE DEPENDENT ON OFFLOAD TYPE. GIVEN HEIGHTS APPROPRIATE FOR 35L BIBO/HV DRUM OPTION
- ADD 152 FOR 60L BIBO/HV DRUM OPTION
- ADD 708 (TYPICAL) FOR CDV OFFLOAD OPTION

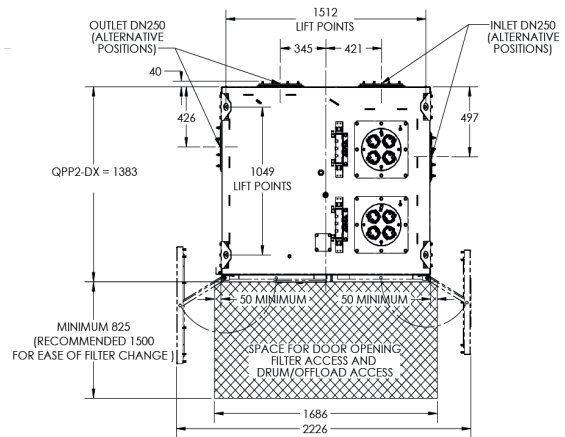
Filter cartridge with 4 segments



Top view: QPP1 DX with 1 filter cartridge



Top view: QPP2 DX with 2 filter cartridges



	QPP1 – 1 filter cartridge	QPP2 – 2 filter cartridges
Air capacity (depending on application and filter type)	800 - 1,500 m ³ /h	1,500 - 3,000 m ³ /h
Operating pressure range	-25 to 0 kPa	
Main filter – Dura-Pleat (polyester) Not for IIC	15 m ²	2 x 15 m ²
Main filter – HemiPleat (cellulose/polyester)	20.5 m ²	2 x 20.5 m ²
Main filter class depending on media	E11/M	
Final filter class: EN 1822	H14, 99.995 % at MPPS	
System dimensions*	1,660 x 867 x 2,641 mm (W x D x H) With Dual Valve: 1,660 x 867 x 3,187 mm (W x D x H)	1,660 x 1,485 x 2,641 mm (W x D x H) With Dual Valve: 1,660 x 1,485 x 3,187 mm (W x D x H)
Weight including filters*	1,200 kg (1,320 kg with Dual Valve)	1,580 kg (1,730 kg with Dual Valve)
Noise level: ISO 3746/EN ISO 11203	LwA = 86.2 dB / LpA EQ 75s = 69.9 dB	
Unit marking: EN 60079-36 (* dependent on application) EN 14460	EX II 1/3(2)† D IIIB(IIIC)† Ex h IIIB T135(160)† °C Da/Dc(Db)† EX II 3G/- (3G, 3/2G)† IIA T4 Gc/- (Gc, Gc/Gb)† EX PSR Pex,max = 1.25 Bar	
Max dust KST (Organic/Metal)	300/200 Bar m/s	

* nominal dimension with 60L offload – Camfil Dual Valve offload option in brackets – other options may vary